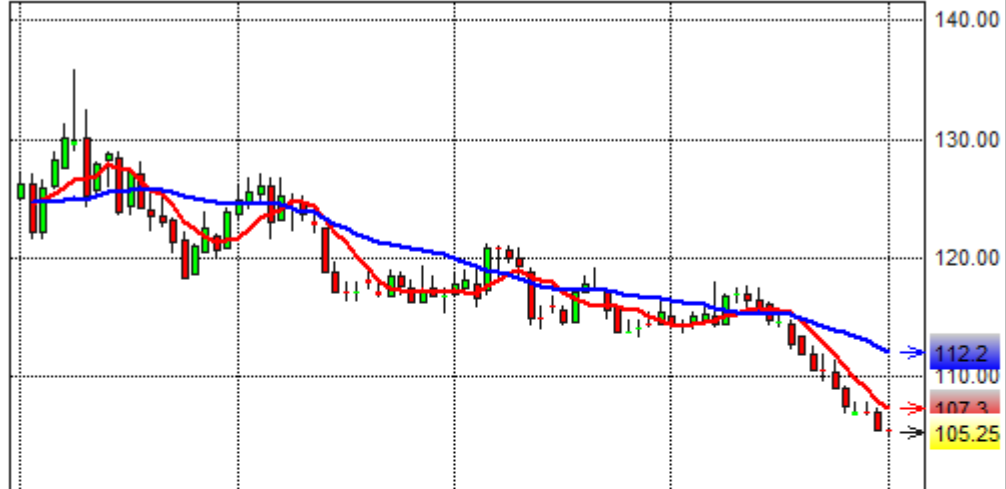
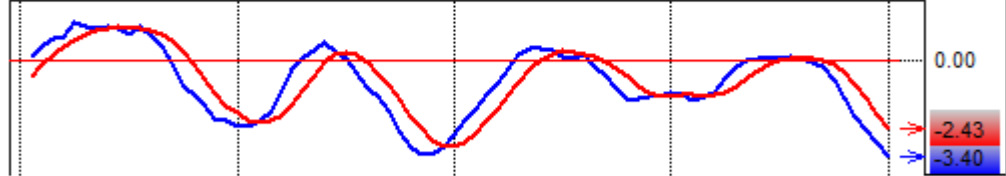


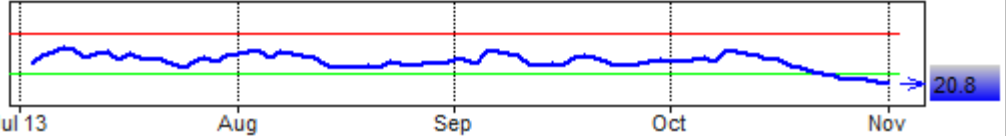
KCZ3 01/11/2013 A: 105,40 M: 105,50 m: 104,85 F: 105,25 PM: 105,15 Q: 1.571 %: -0,14 DIF: -0,14



MACD (10, 20, 5) - [003] KCZ3 (D) MACD: -3,40 SINAL: -2,43

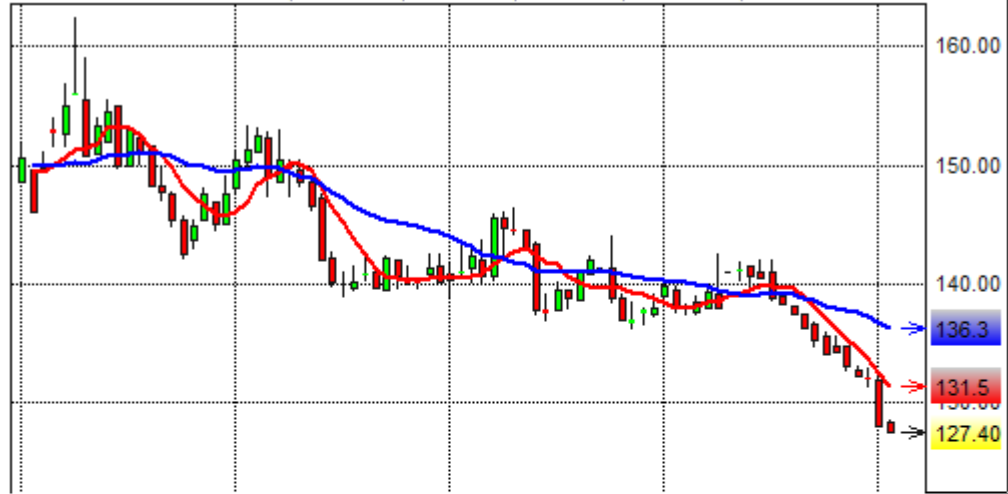


IFR (14) - [003] KCZ3 (D) IFR: 20,8

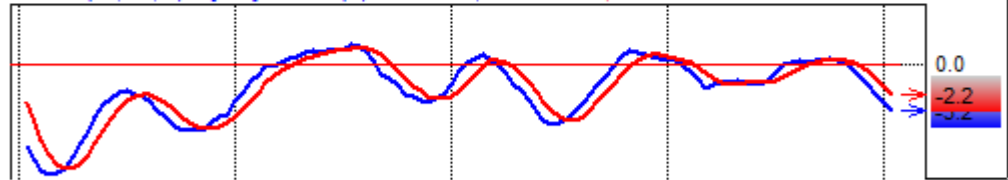


Jul 13 Aug Sep Oct Nov

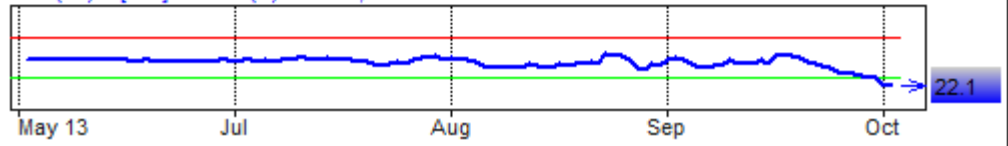
ICFZ13 01/11/2013 A: 128,40 M: 128,45 m: 127,40 F: 127,40 PM: 127,70 Q: 46 %: -0,47 DIF: -0,6



MACD (10, 20, 5) - [057] ICFZ13 (D) MACD: -3,2 SINAL: -2,2



IFR (14) - [057] ICFZ13 (D) IFR: 22,1

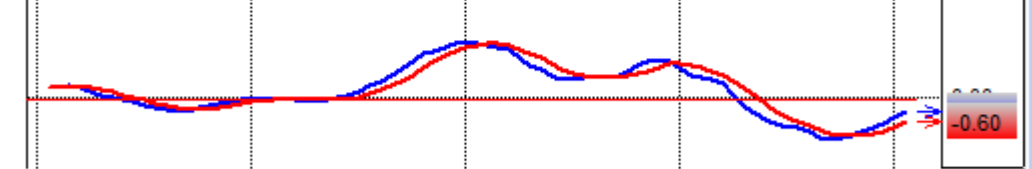


May 13 Jul Aug Sep Oct

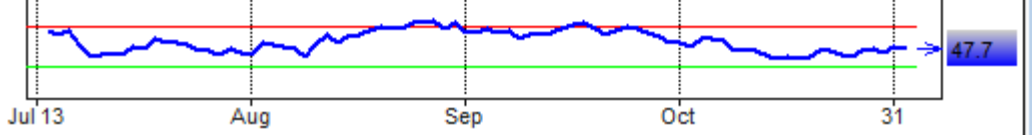
BGX13 01/11/2013 A: 106,88 M: 106,94 m: 106,63 F: 106,68 PM: 106,88 Q: 44 %: -0,20 DIF: -0,...



MACD (10, 20, 5) - [057] BGX13 (D) MACD: -0,35 SINAL: -0,60

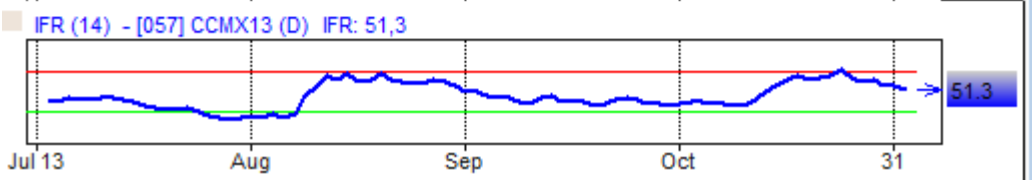
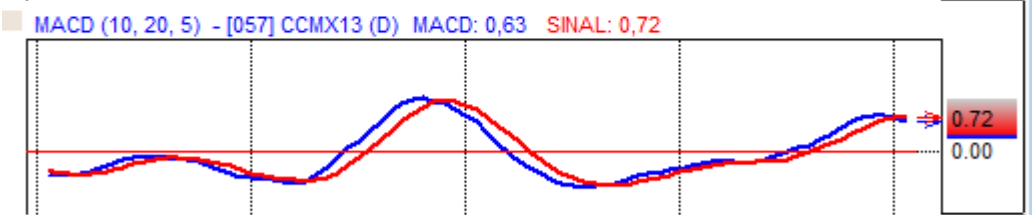
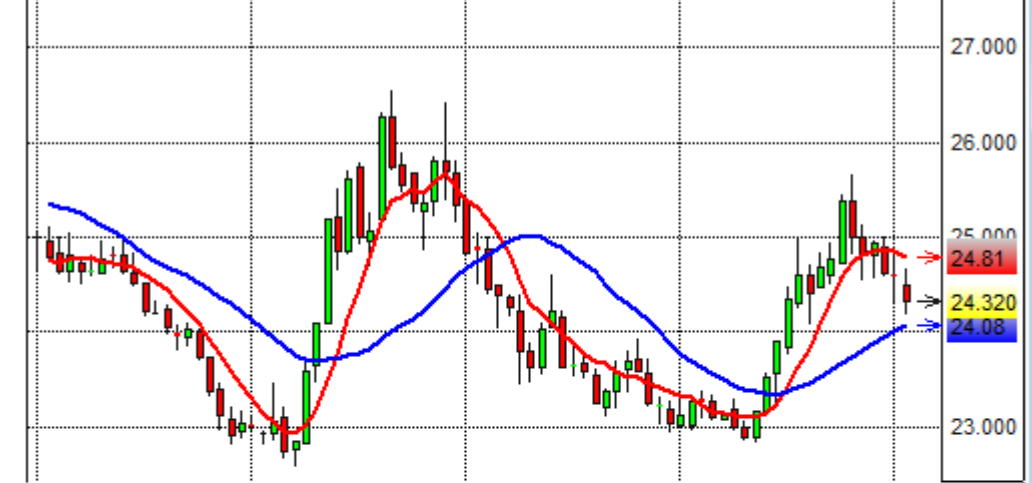


IFR (14) - [057] BGX13 (D) IFR: 47,7



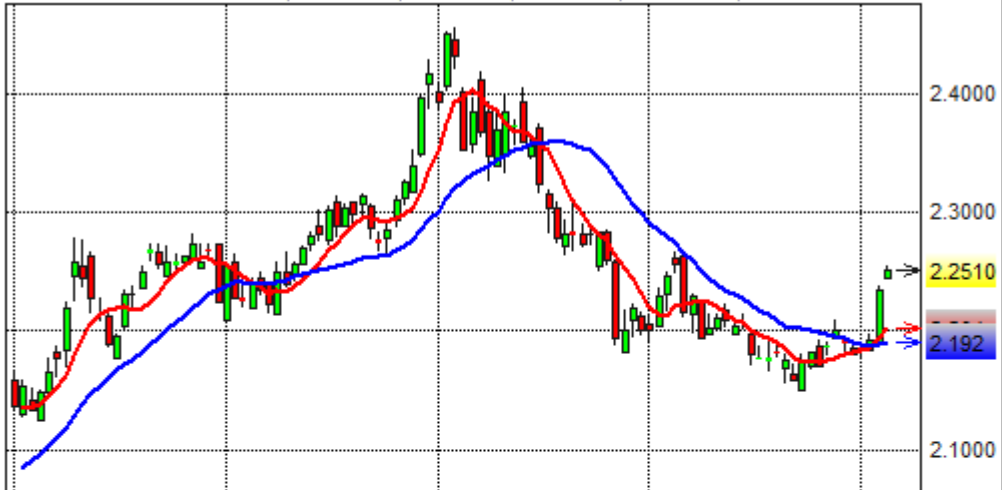
Jul 13 Aug Sep Oct 31

CCMX13 01/11/2013 A: 24,500 M: 24,660 m: 24,180 F: 24,320 PM: 24,329 Q: 78 %: -1.02 DIF: -0

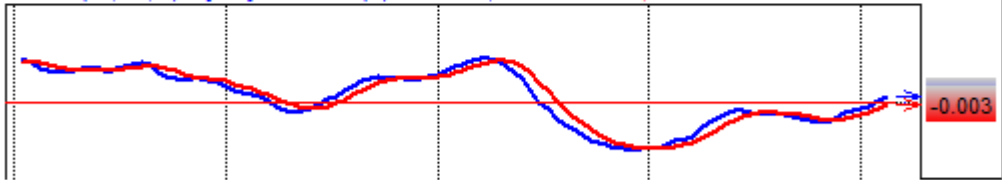


Jul 13 Aug Sep Oct 31

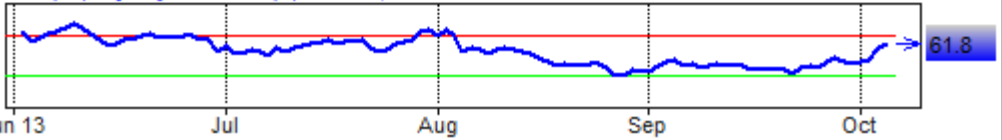
DOL COM 01/11/2013 A: 2,2440 M: 2,2540 m: 2,2470 F: 2,2510 PM: 0,0000 Q: 0 %: 0.76 DIF: 0.0



MACD (10, 20, 5) - [200] DOL COM (D) MACD: 0,006 SINAL: -0,003



IFR (14) - [200] DOL COM (D) IFR: 61,8

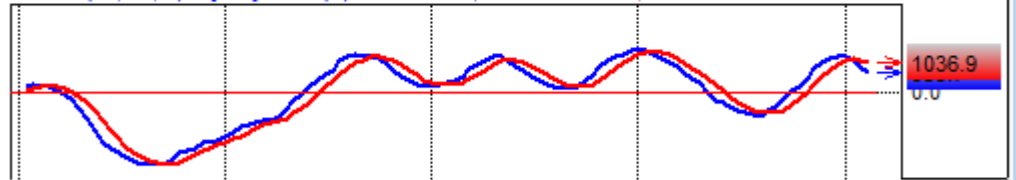


Jun 13 Jul Aug Sep Oct

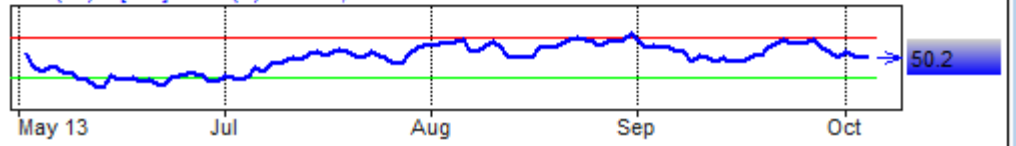
IBOV 31/10/2013 A: 54.166,82 M: 54.466,49 m: 53.602,45 F: 54.256,20 PM: 54.033,30 Q: 2.813,3



MACD (10, 20, 5) - [012] IBOV (D) MACD: 683,7 SINAL: 1.036,9



IFR (14) - [012] IBOV (D) IFR: 50,2



May 13 Jul Aug Sep Oct